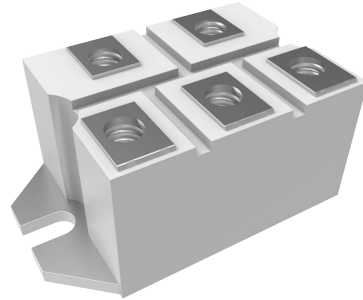


Mechanical Data

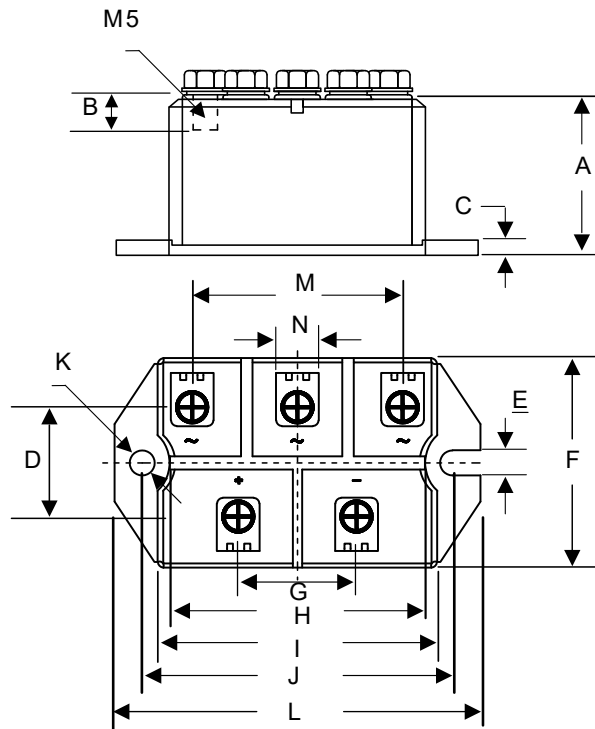
Package 3D Photo

- Weight: 130.0000 grams (Approximate)
- Halogen Free Available Upon Request By Adding Suffix "-HF"
- Lead Free Finish/RoHS Compliant (Note1) ("P" Suffix Designates RoHS Compliant. See Ordering Information)



Note: 1. High Temperature Solder Exemption Applied, see EU Directive Annex 7a.

Package Outline Dimensions



DIMENSIONS					
DIM	INCHES		MM		NOTE
	MIN	MAX	MIN	MAX	
A	1.161	1.201	29.50	30.50	
B	0.256	0.295	6.50	7.50	
C	0.110	0.138	2.80	3.50	
D	0.831	0.870	21.10	22.10	
E	0.197	0.236	5.00	6.00	
F	1.634	1.673	41.50	42.50	
G	0.886	0.925	22.50	23.50	
H	1.870	1.909	47.50	48.50	
I	2.106	2.146	53.50	54.50	
J	2.343	2.382	59.50	60.50	
K	0.217		5.50		Φ
L	2.815	2.854	71.50	72.50	
M	1.555	1.594	39.50	40.50	
N	0.374	0.413	9.50	10.50	

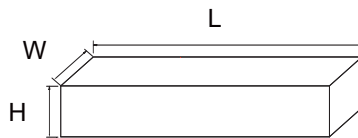
Packing Quantity

Package	Package Type	Minimum Packing Quantity	Carton Quantity
M2	Box	8	80

Note 1: These are minimum package quantities only. Minimum orders will differ. Contact the factory for more information on minimum order quantities.

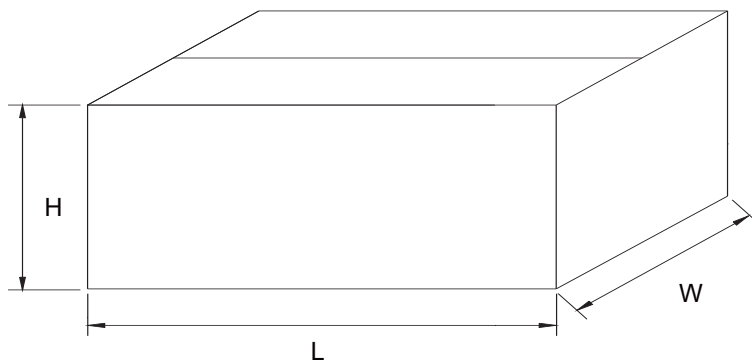
Dimensions

Inbox Size



Description	Dimension	Specification(mm typical)
Length	L	302
Width	W	268
Height	H	53

Carton Size



Description	Dimension	Specification(mm typical)
Length	L	555
Width	W	310
Height	H	280