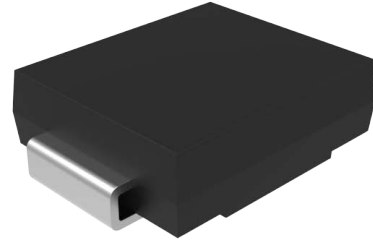


Mechanical Data

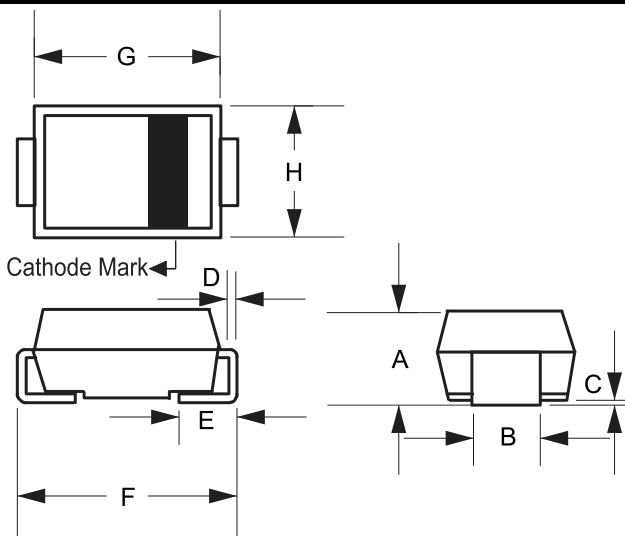
- Surface Mount Package
- Weight: 0.257 grams (Approximate)
- Moisture Sensitivity Level 1
- Halogen Free. "Green" Device (Note 1)
- Epoxy Meets UL 94 V-0 Flammability Rating
- Lead Free Finish/RoHS Compliant (Note2) ("P" Suffix Designates RoHS Compliant. See Ordering Information)

Package 3D Photo



Note:1. free "Green" products are defined as those which contain <900ppm bromine, <900ppm chlorine (<1500ppm total Br + Cl) and <1000ppm antimony compounds.
2. High Temperature Solder Exemption Applied, see EU Directive Annex 7a.

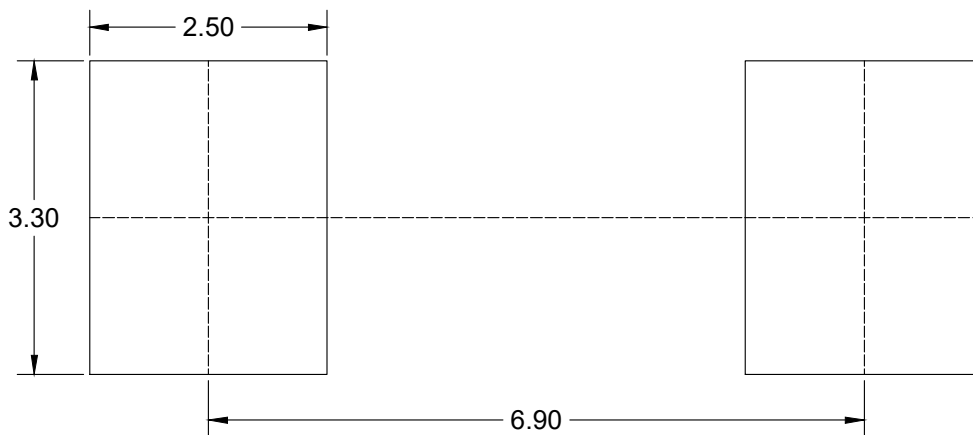
Package Outline Dimensions



| DIM | INCHES | | MM | | NOTE |
|-----|--------|-------|-------|-------|------|
| | MIN | MAX | MIN | MAX | |
| A | 0.079 | 0.103 | 2.00 | 2.62 | |
| B | 0.108 | 0.128 | 2.75 | 3.25 | |
| C | 0.002 | 0.008 | 0.051 | 0.203 | |
| D | 0.006 | 0.012 | 0.152 | 0.305 | |
| E | 0.030 | 0.060 | 0.76 | 1.52 | |
| F | 0.305 | 0.320 | 7.75 | 8.13 | |
| G | 0.260 | 0.280 | 6.60 | 7.11 | |
| H | 0.220 | 0.245 | 5.59 | 6.22 | |

Suggested Solder Pad Layout

Unit:mm



Notes:

- 1.The suggested land pattern dimensions have been provided for reference only.
- 2.For further information,please reference document IPC-7351A.

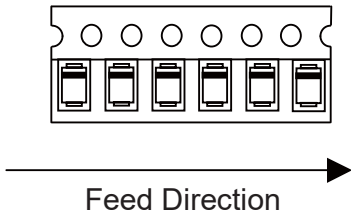
Packing Quantity

| Package | Tape Width (mm) | Reel Size (inch) | Reel Quantity | Carton Quantity |
|---------|-----------------|------------------|---------------|-----------------|
| SMC | 16 | 13 | 3000 | 42K |

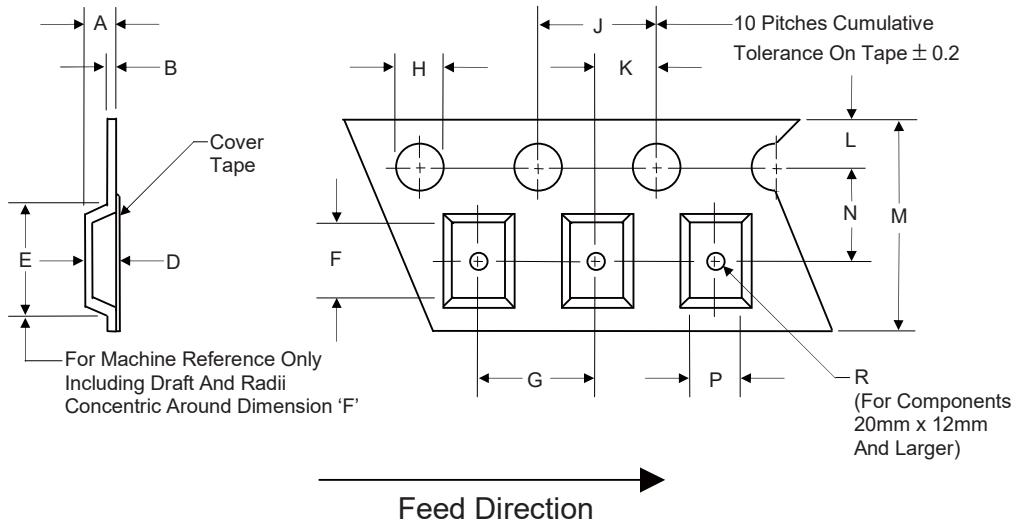
Note 1: These are minimum package quantities only. Minimum orders will differ. Contact the factory for more information on minimum order quantities.

Note 2: MCC Tape&reel products meets EIA-481 REV D specification.

Device Tape Orientation

| Package | Tape Width (mm) | Tape Orientation |
|---------|-----------------|--|
| SMC | 16 |  |

Embossed Carrier Tape Specifications



| Tape Width | H | L | J | B | D | F | P |
|-------------|---------|------|------|-----|------------|---|---|
| 16mm | 1.5 | 1.75 | 4.0 | 0.6 | See Note 3 | | |
| (Tolerance) | +0.1/-0 | ±0.1 | ±0.1 | Max | | | |

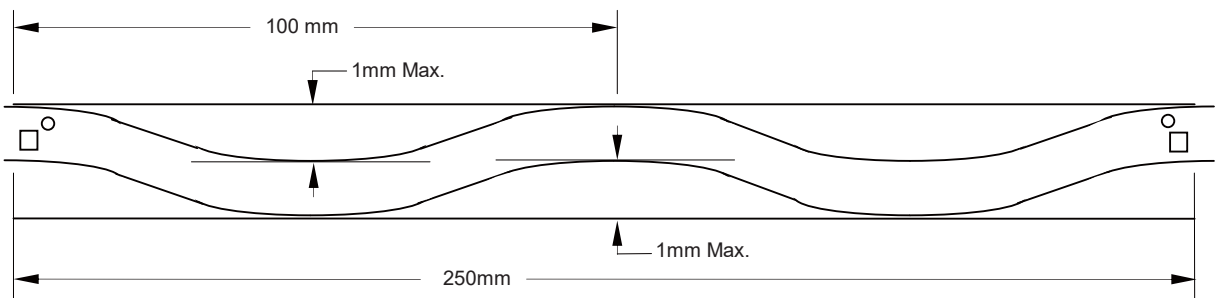
| Tape Width | E | R | N | A | K | M | G |
|-------------|------|-----|-------|-----|-------|------|------|
| 16mm | 12.1 | 1.5 | 7.5 | 6.5 | 2.0 | 16.0 | 8.0 |
| (Tolerance) | Max | Min | ±0.10 | Max | ±0.10 | ±0.3 | ±0.1 |

Note 3: D,E,F are determined by constant size. The clearance between the part and the tape cavity must be within 0.05mm min. to 0.90mm max. for 16mm tape.

Embossed Carrier Tape Specifications

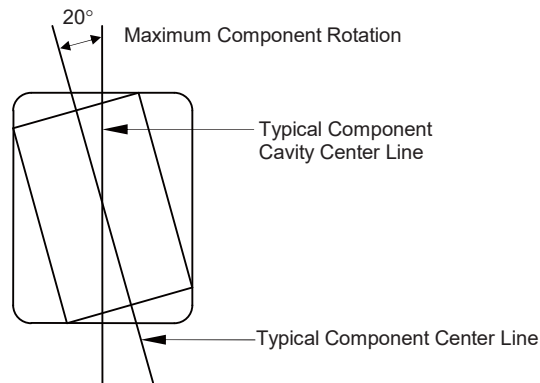


| Tape Size | R Min. |
|-----------|--------|
| 16mm | 30mm |

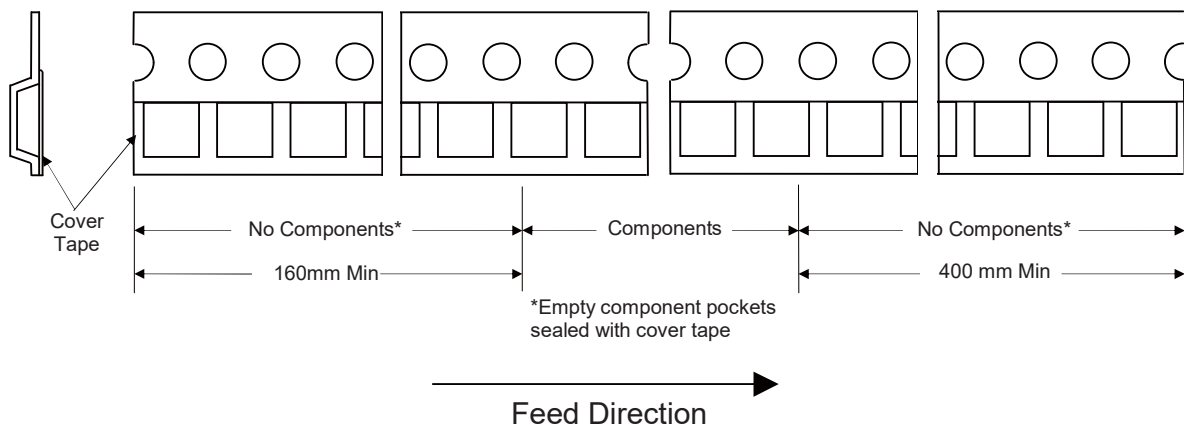


Camber (Top View)

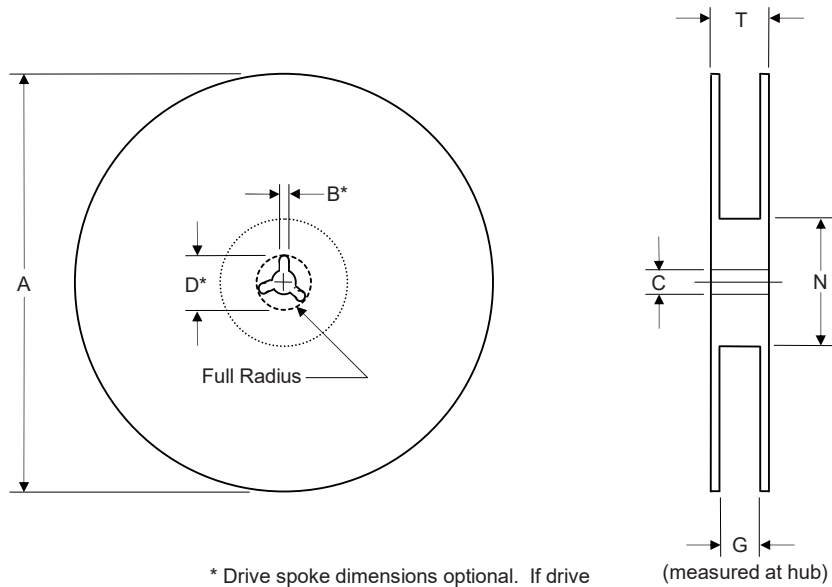
Allowable camber to be 1mm/100mm non-accumulative over 250mm



Start and Finish Specification



Surface Mount Reel Specifications

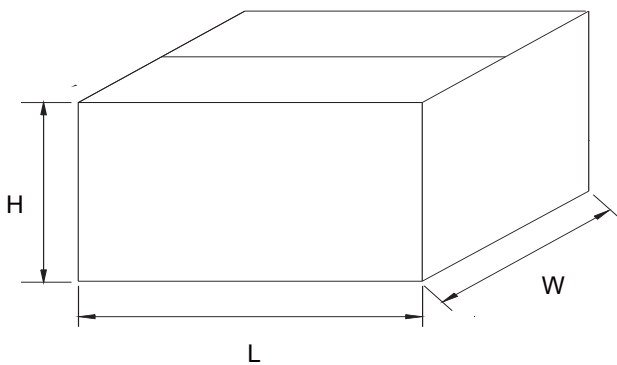


* Drive spoke dimensions optional. If drive spoke is used then asterisked dimensions apply.

| Tape Width | A | B | C | D | N | G | T |
|-------------|-----|-----|------|------|-----|------|------|
| 16mm | 360 | 1.5 | 13.0 | 20.2 | 55 | 16.4 | 22.4 |
| (Tolerance) | Max | Min | ±0.2 | Min | Min | +2.0 | Max |

Dimensions

Carton Size



| Description | Dimension | Specification(mm typical) |
|-------------|-----------|---------------------------|
| Length | L | 355 |
| Width | W | 345 |
| Height | H | 315 |